

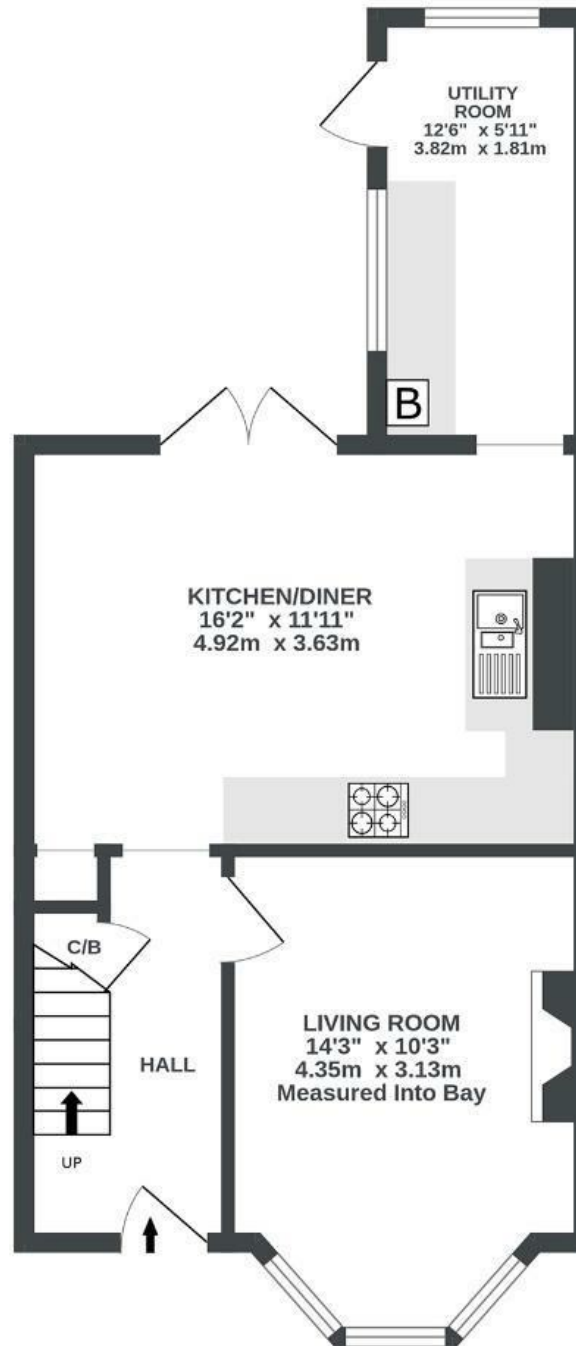
Highworth Road

ST ANNE'S

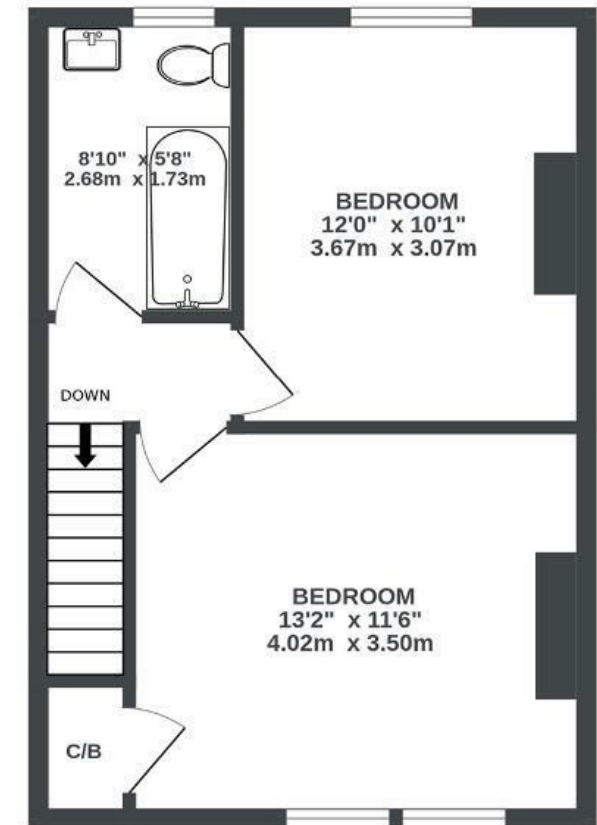
APPROXIMATE FLOOR AREA
76.1 SQM / 819 SQFT



GROUND FLOOR
457 sq.ft. (42.4 sq.m.) approx.



1ST FLOOR
362 sq.ft. (33.6 sq.m.) approx.



Illustrations are for reference purposes only, measurements are approximate, not to scale.

Boardwalk

Highworth Road , BRISTOL

£

£385,000



BS4 4AQ

zzz

2 Bedrooms



1 Bathrooms

"I love this house, the kitchen is perfect for entertaining - you can cook whilst your friends sit at the table and be involved in the conversation (there is also a great space for dancing!) The living room is cosy and the house heats up really quickly making it extra cosy in winter. The garden is lovely and long, there are so many lovely flowers that pop up throughout the year so it's usually very colourful and low maintenance. Our neighbours are the cherry on top, Highworth Road has been the kindest and most welcoming community."

